



PUBLIC PRESENTATION

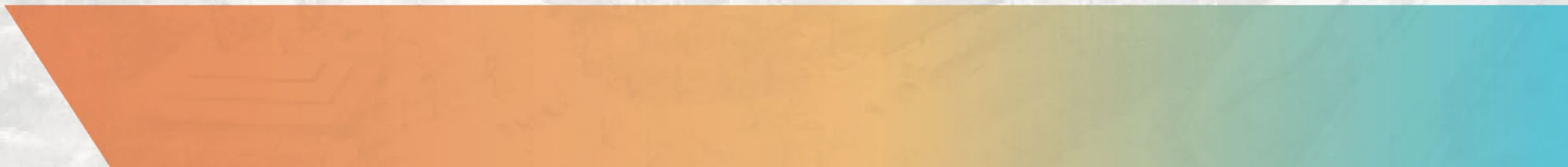


AGENDA

- 01 Welcome
- 02 Land Use Recommendation
 - Site History
 - Engagement Overview
 - Analysis
- 03 Implementation/Next Steps



WELCOME





Welcome Summary

*Since we **last** saw each other...*

- ❑ **Reviewed** past neighborhood planning efforts and goals...
- ❑ Continued to **collect** and **analyze** existing conditions information...
- ❑ **Synthesized** comments and drawings from all steering committee, focus group, and public meetings...
- ❑ **Developed** a land use recommendation based on site analysis, considerations, and conditions...
- ❑ For the land use recommendation, identified **implementation steps and objectives**...



Land Use Plan Process Overview

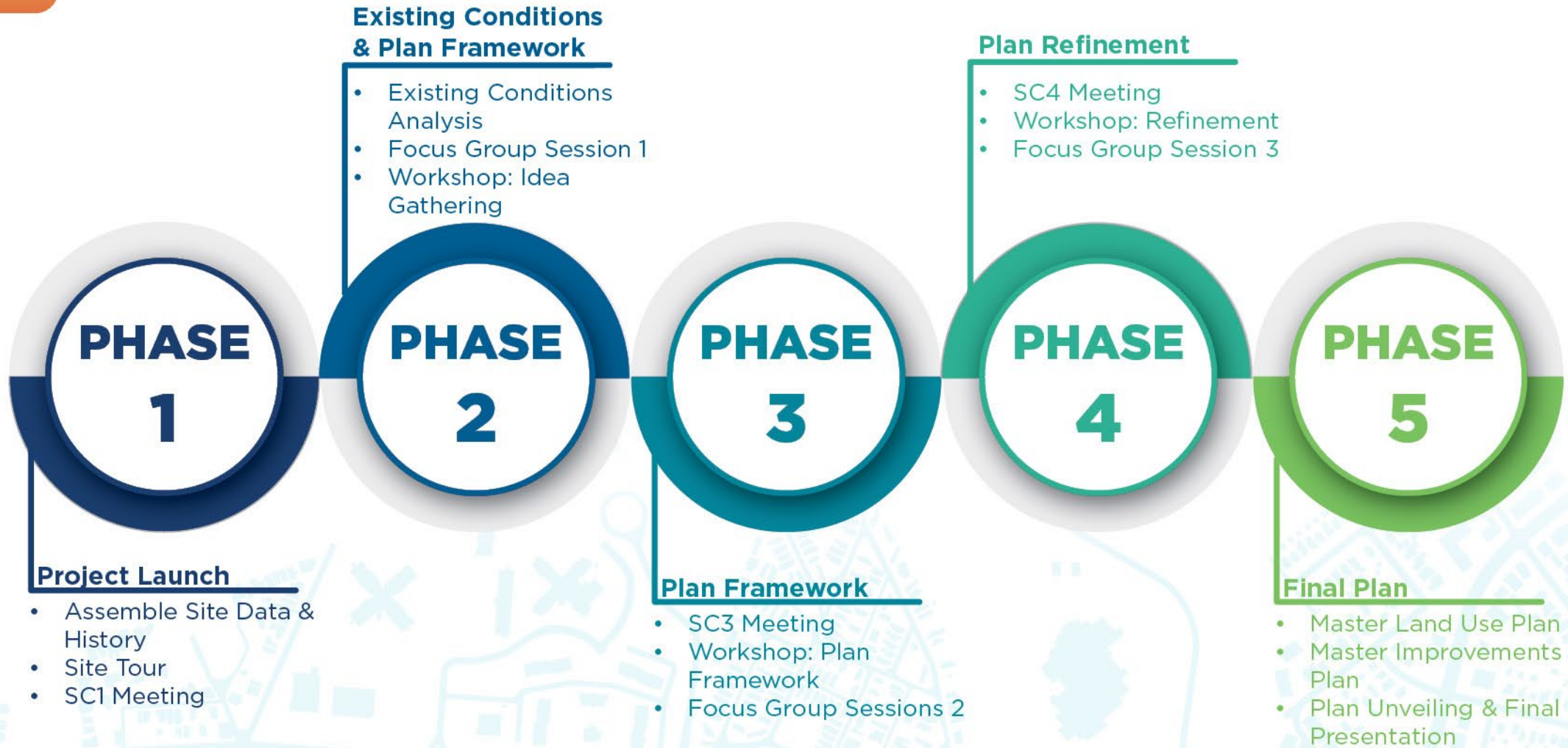
What is a land use plan?

A land use plan outlines a **vision** or **intent**, recommending the highest and best use for a proposed area or parcel of land. Although it does not go through specific details, the plan serves as the blueprint for change and implementation.

Specific concepts or designs come **afterwards** in the form of specific master or development plans.



Land Use Plan Process Approach





Project Process Project Timeline

2021

2022

2023

2024+

NEGOTIATION

ACQUISITION

OPERATIONS

LAND USE PLANNING

TRANSITION

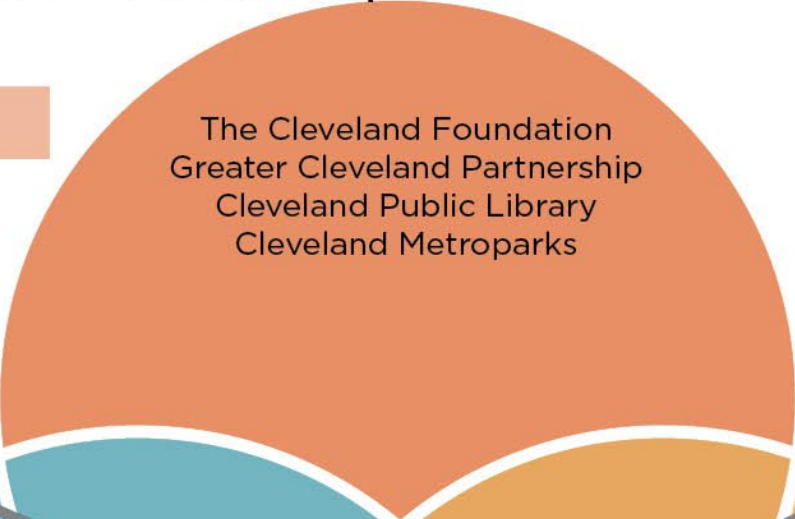
WE ARE HERE





Project Process Partnerships

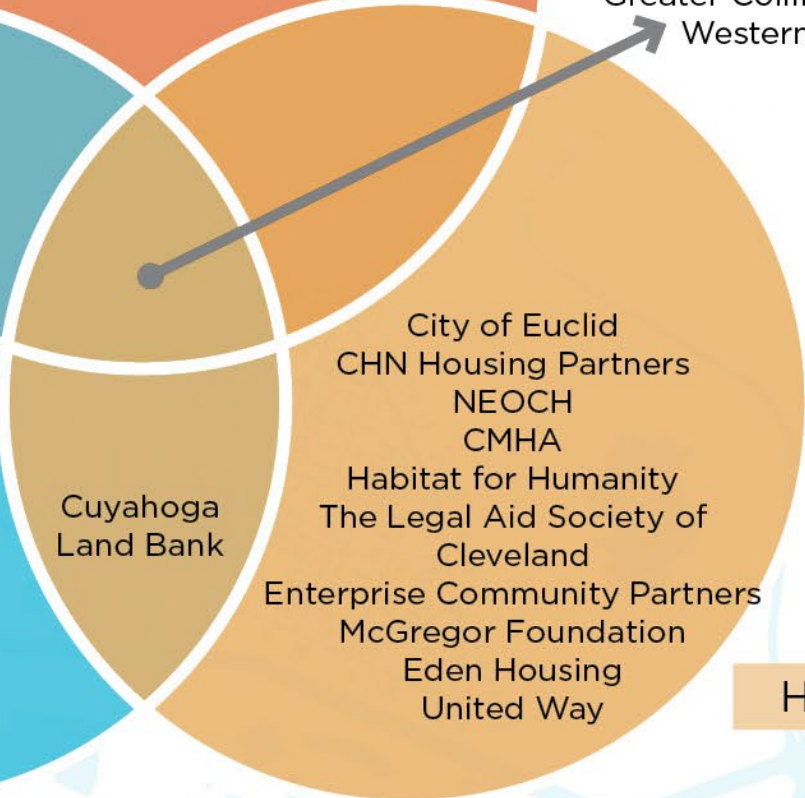
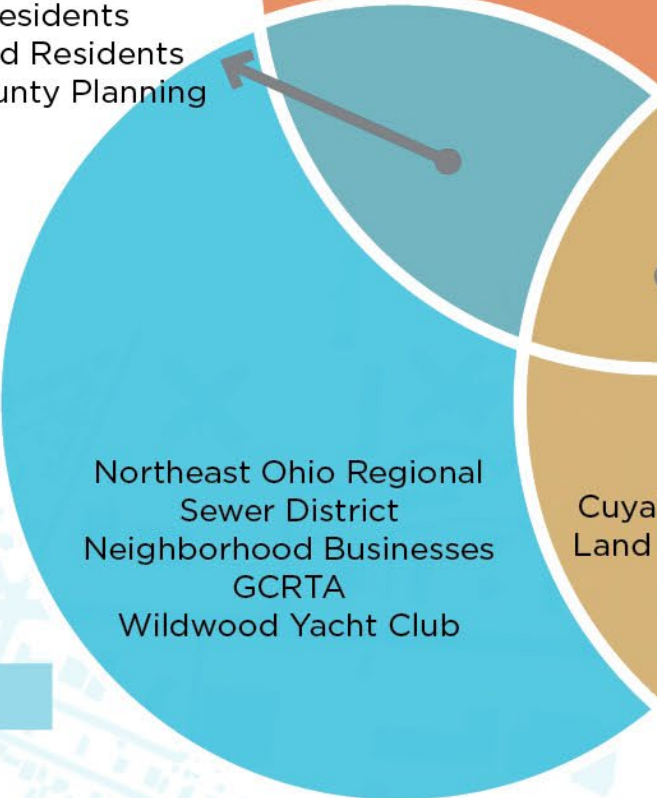
Steering Committee



Northeast Ohio Areawide
Coordinating Agency
EBMHC Residents
Neighborhood Residents
Cuyahoga County Planning

City of Cleveland
Cleveland Neighborhood Progress
Greater Collinwood Development Corporation
Western Reserve Land Conservancy

Stakeholders



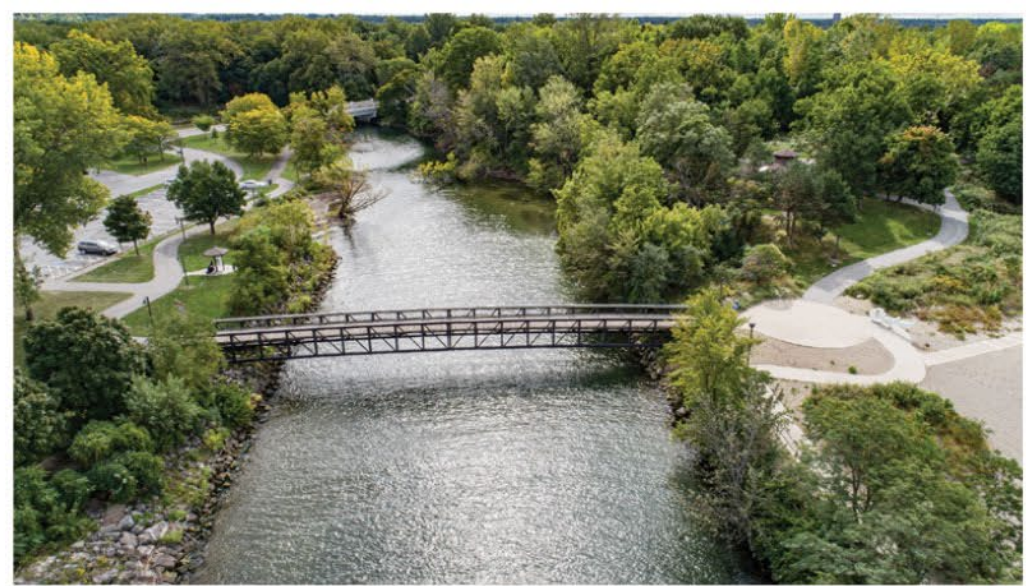
Housing Resource Partners



Project Process Study Area



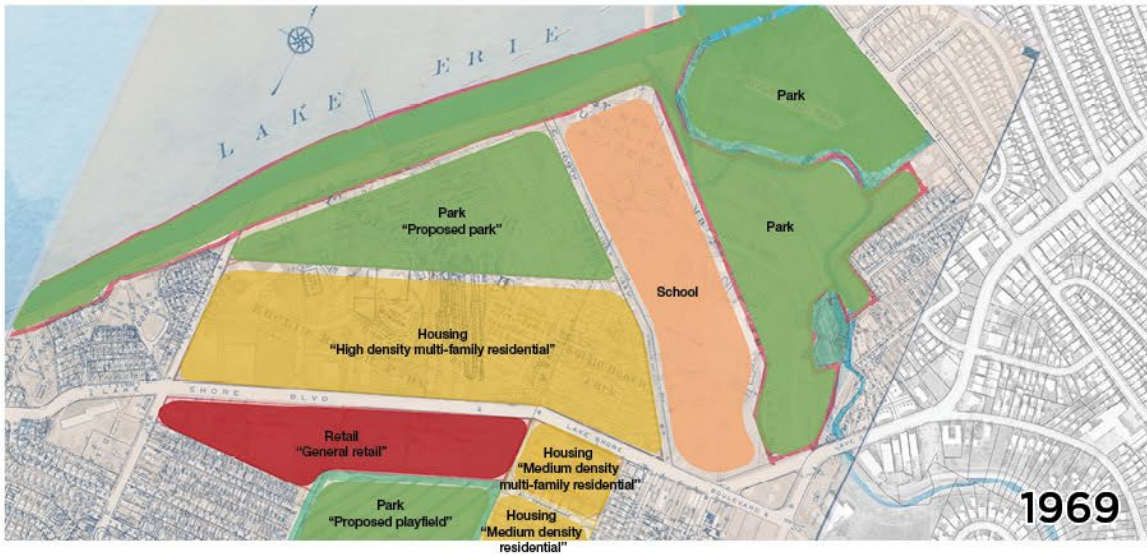
Project Process Study Area



Project Process Land Use Character



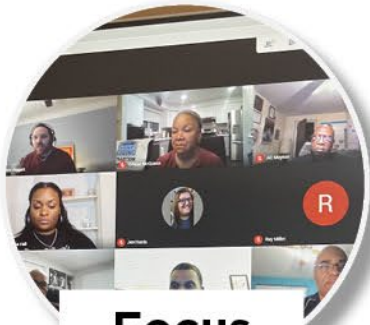
Project Process Study Area



Project Process Previous Studies, Land Use Character



Engagement Overview Tactics



Focus Groups



Pop-Up Engagement



Mailers/ Newsletters

Online Survey



Canvassing



Community Meetings



Yard Signs





Engagement Overview Results To Date

4 Months of Engagement

525+ people engaged

15 Yard Signs Placed in the Community

Canvassing

3 Days of survey handouts and discussion



7 Methods of Engagement

ONLINE SURVEY
FOCUS GROUPS
YARD SIGNS

CANVASSING
NEWSLETTER
POP-UP EVENTS
MEETINGS

6 Community Meetings

Workshops, resident meetings, and site walks

Online Survey

350+ Total Responses

Project Website



Engagement Overview Key Themes



**Neighborhood
Amenities**



**Housing
Options**



Land Use



Connectivity

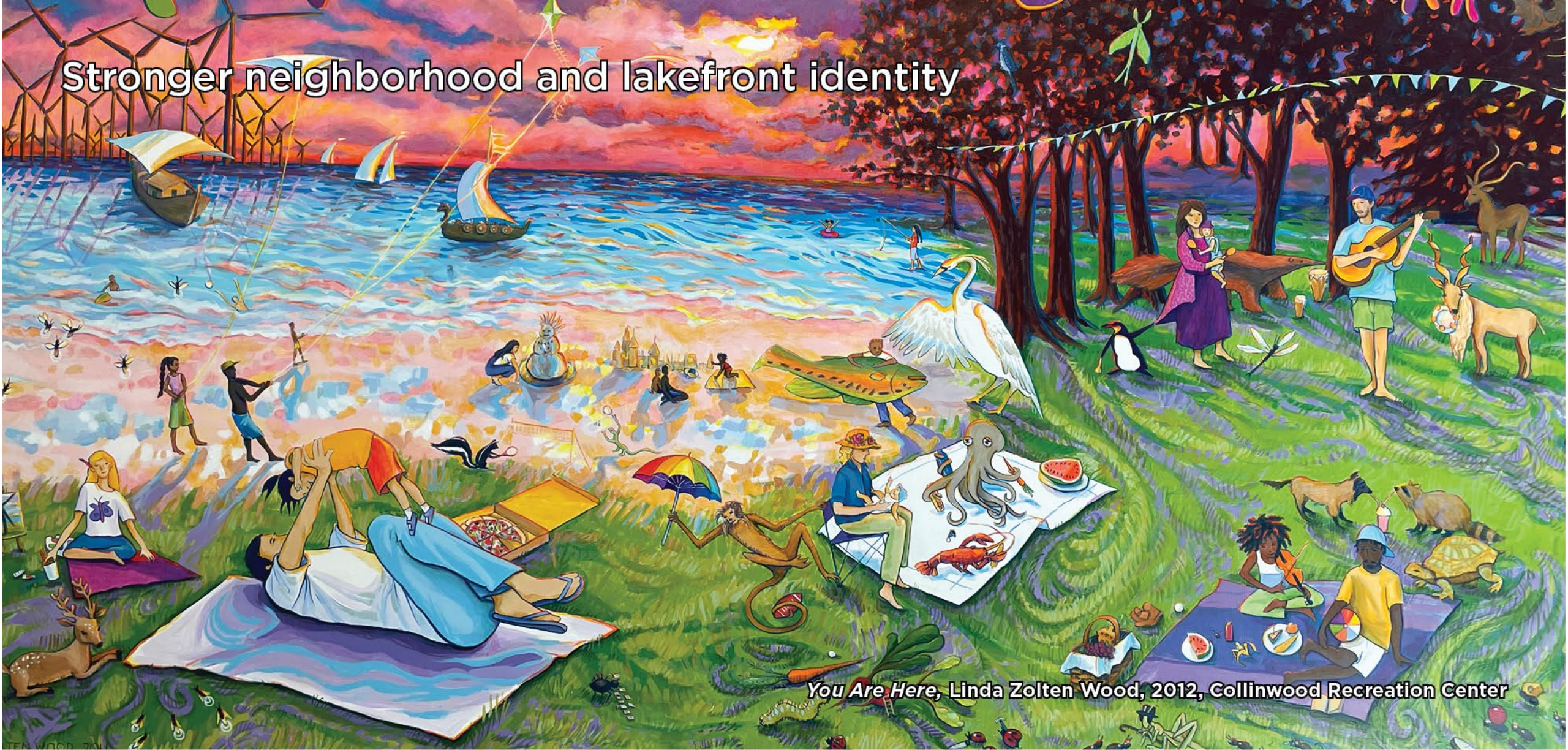


**Location,
Location,
Location**



**Community
Pride**

Stronger neighborhood and lakefront identity



You Are Here, Linda Zolten Wood, 2012, Collinwood Recreation Center

Engagement Overview What We Heard

Visible, safe, inviting connections to the lakefront



Engagement Overview What We Heard

Improved park amenities and connections



Engagement Overview What We Heard

Revitalized Lakeshore Boulevard streetscape and retail corridor



Engagement Overview What We Heard

North/south neighborhood connections across Lakeshore Boulevard



An aerial photograph of a city, showing a large building with a distinctive roof structure in the upper center, surrounded by residential areas and streets. The image is faded and serves as a background for the text.

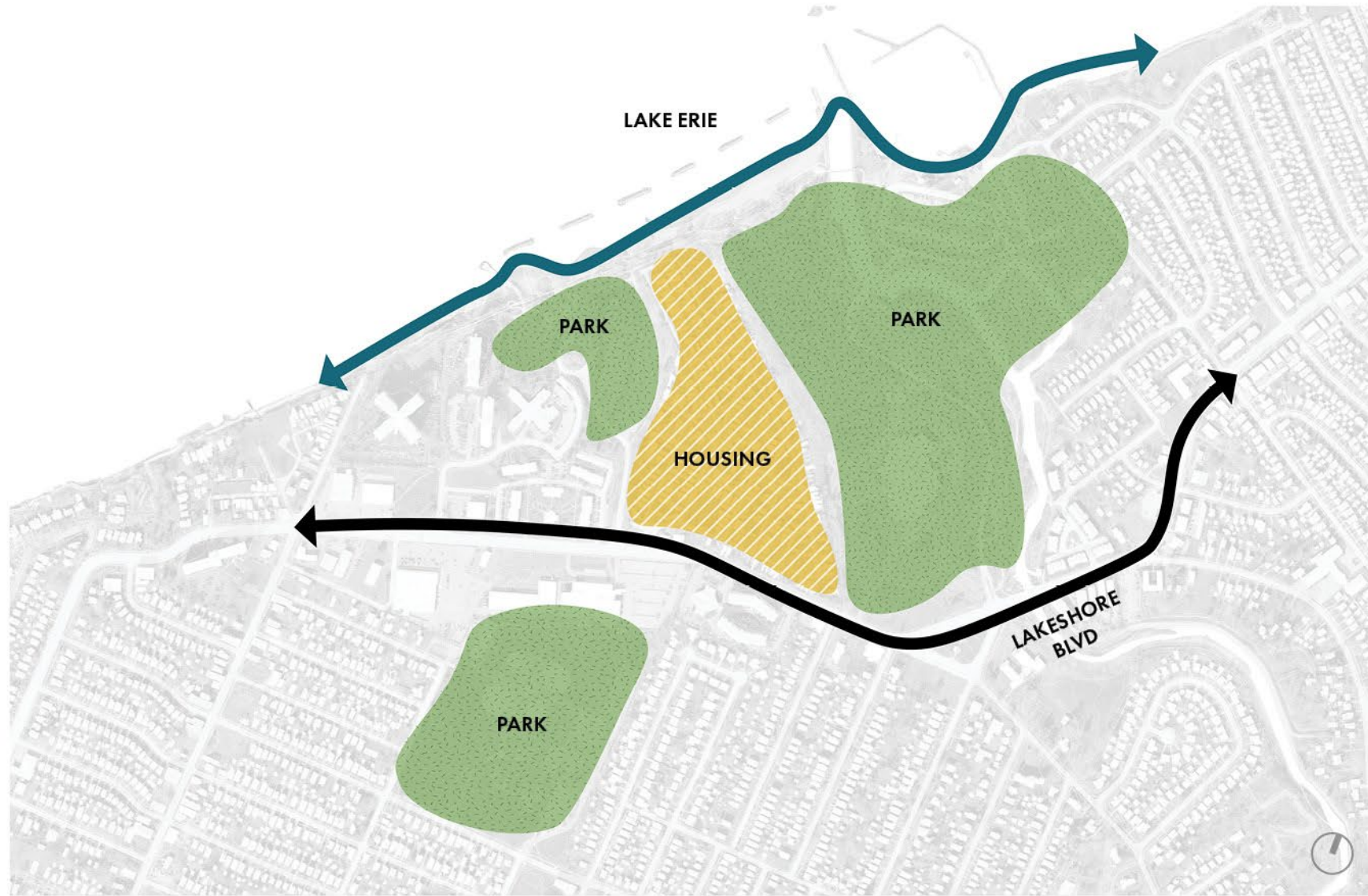
LAND USE PLAN RECOMMENDATION



Existing Landuse



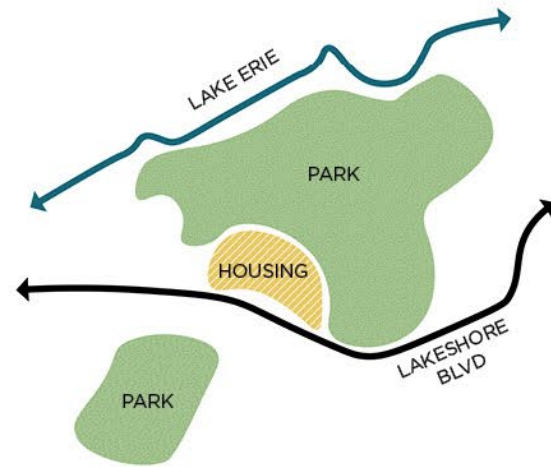
Existing Landuse



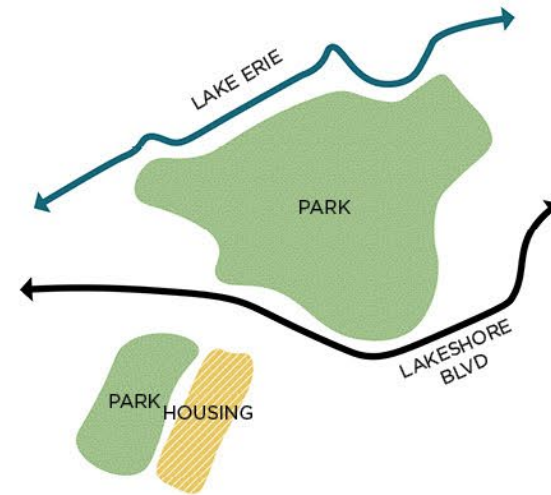
Existing Landuse



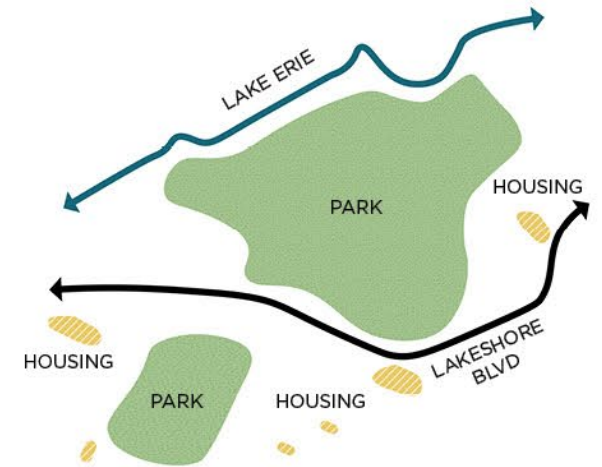
1. ON-SITE CONSOLIDATED HOUSING A



2. ON-SITE CONSOLIDATED HOUSING B

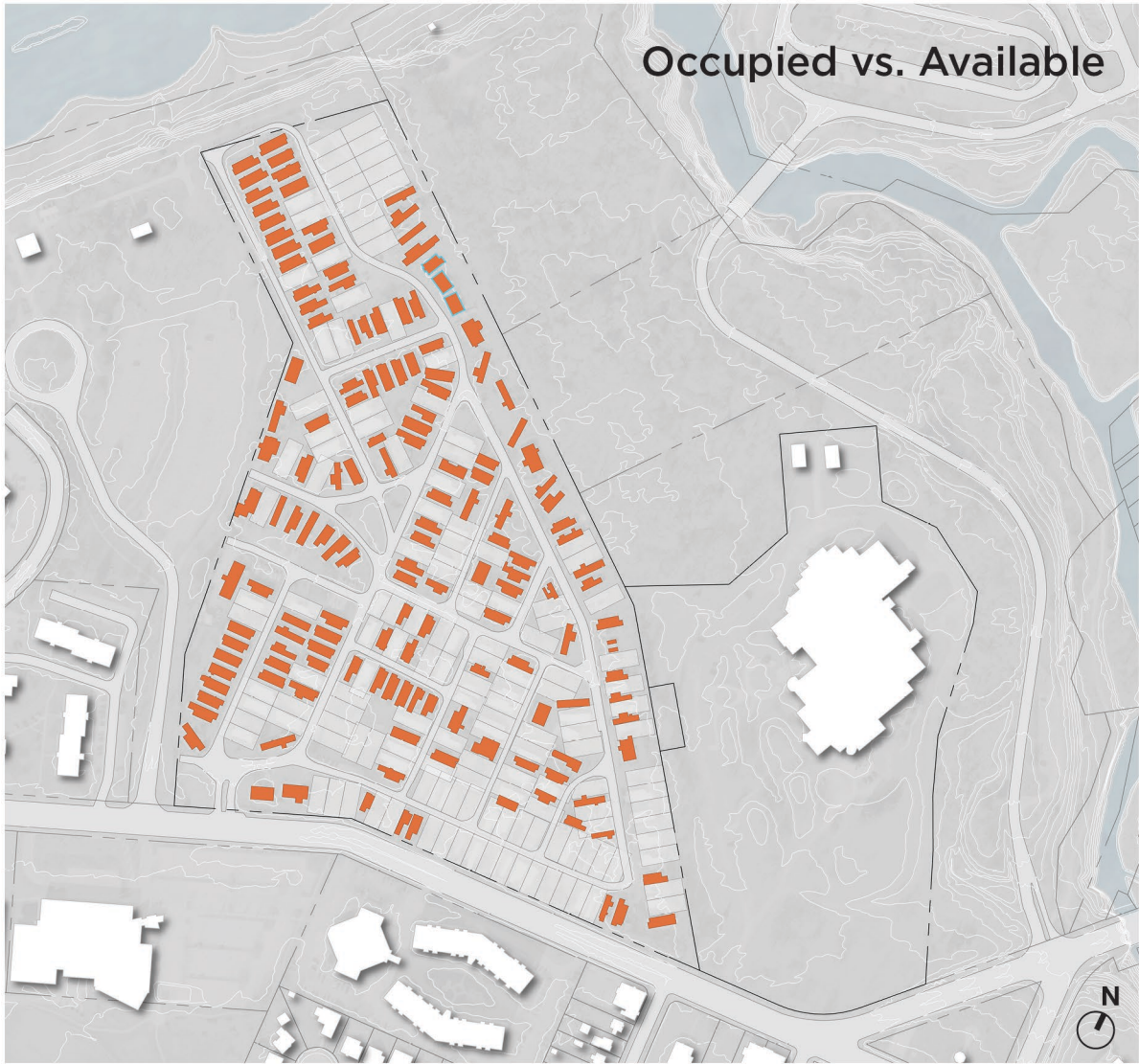


3. INFILL CONSOLIDATED HOUSING



4. INFILL DISTRIBUTED HOUSING

Recommendation - Previous Concepts

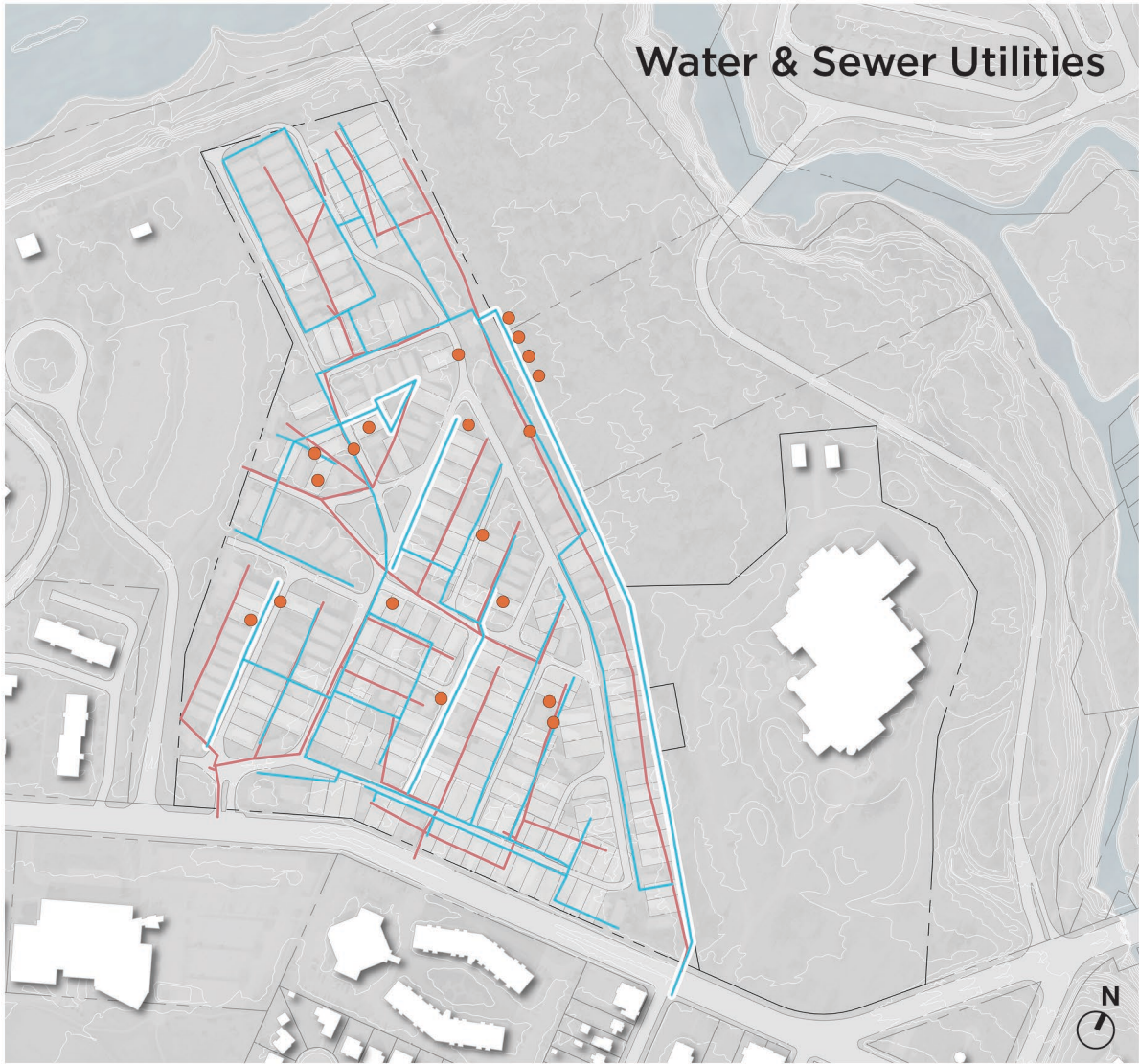


51% Occupied
49% Available

Total Pads	271
Mobile home units	167
Occupied units	139
Units built after 1980	36
Units with subleases	24

**as of 12/31/2022*

- Available sites (vacant + potential sites)
- Occupied mobile home units



**3,483%
to replace
utilities in-kind**

- 2022 Utility Maintenance
- Existing Sewer
- Existing Sewer
- Existing Water Maintenance

**2022 Incurred
Maintenance Costs***

\$199,779

Utility repairs	\$48,570
Wireless Submeters	\$89,000
Snow Removal	\$23,490
Tree Maintenance	\$17,280
Feral Cat Relocation	\$4,938
Miscellaneous	\$16,321

**as of 12/31/2022*



Recommendation



Recommendation Consolidated Parks with Additional Amenities



Recommendation Consolidated Parks with Better Connections



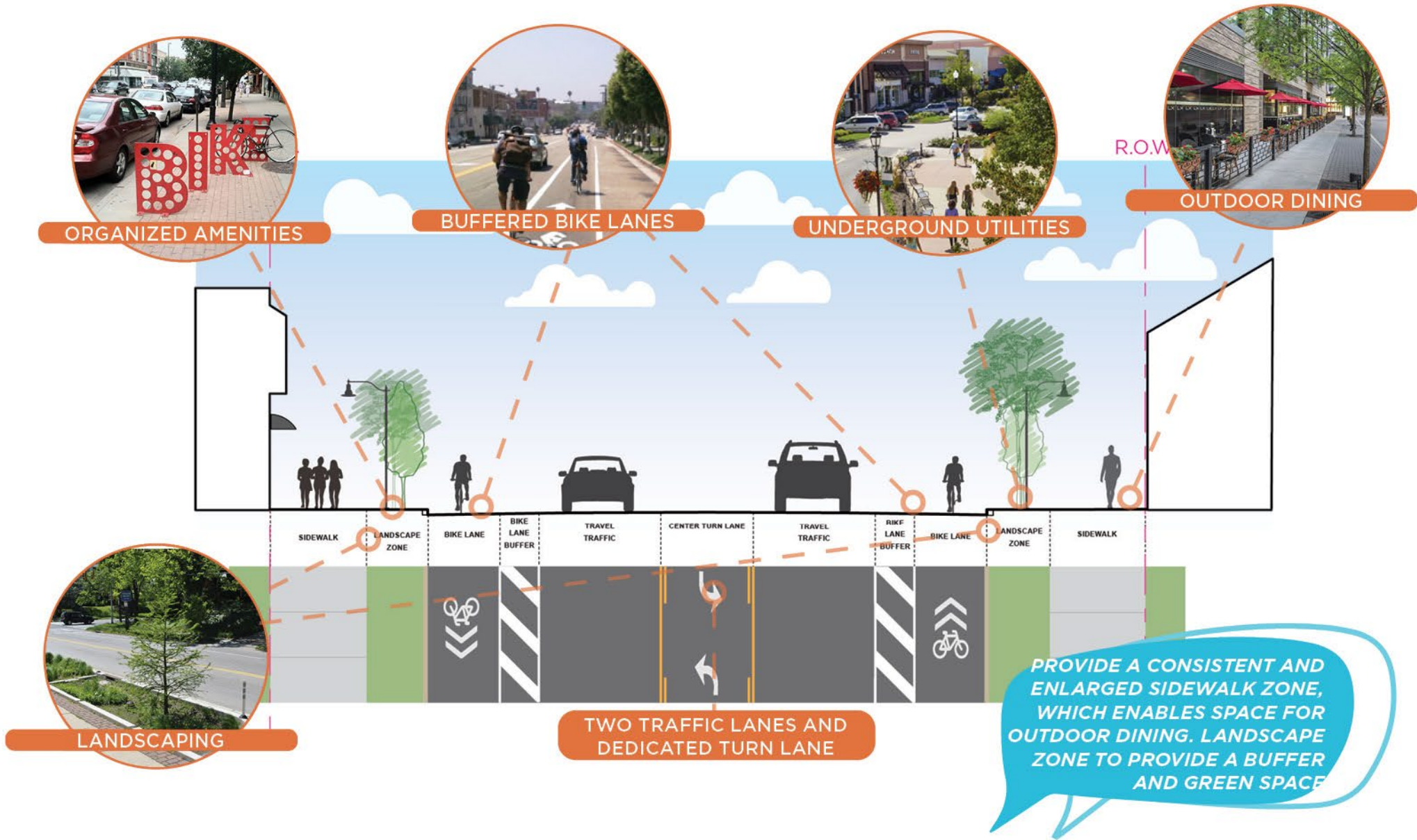
Recommendation Neighborhood-based Infill Housing



Recommendation Consolidated Library Along Lakeshore Boulevard



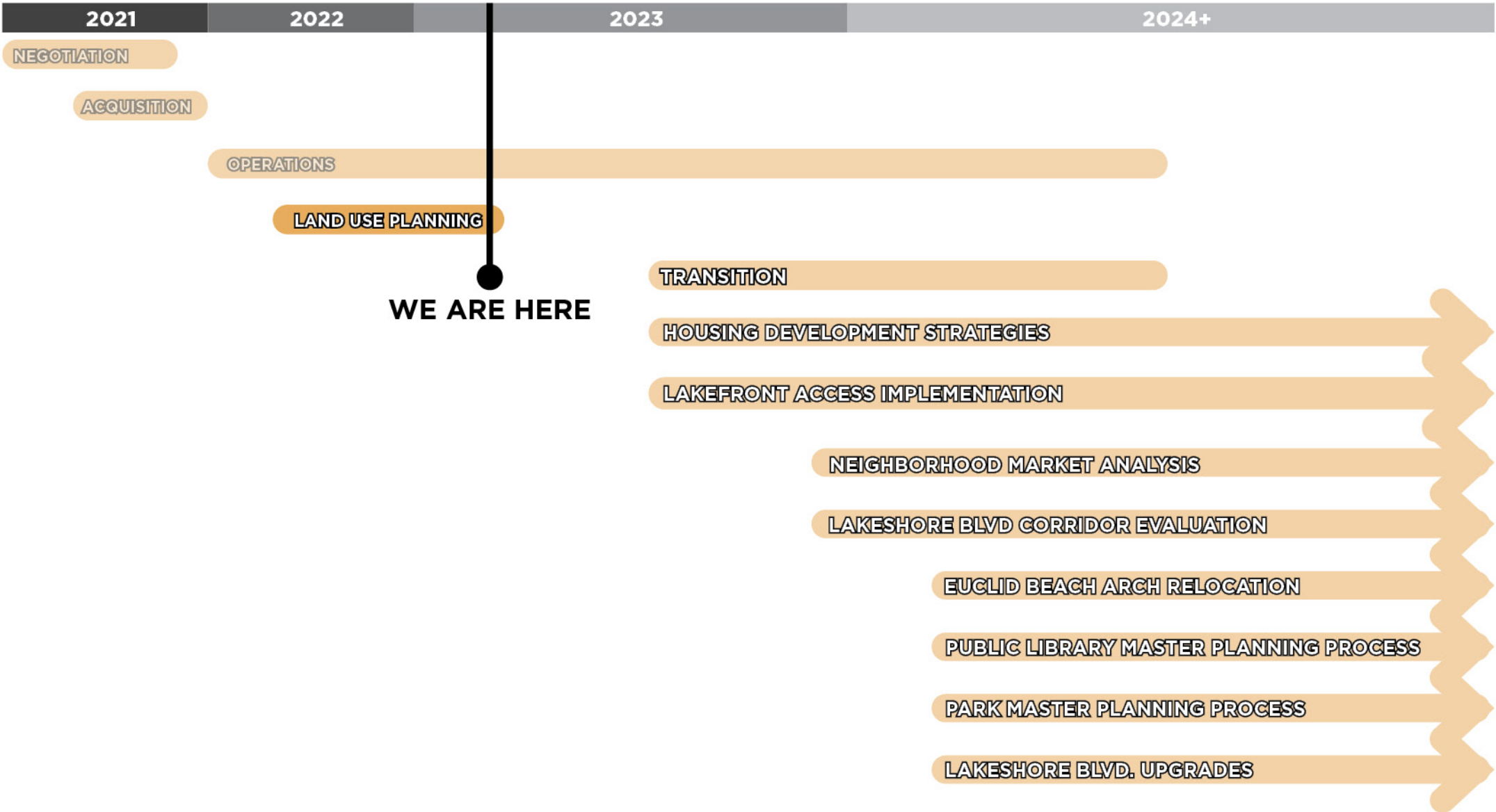
Recommendation Revitalized Lakeshore Boulevard



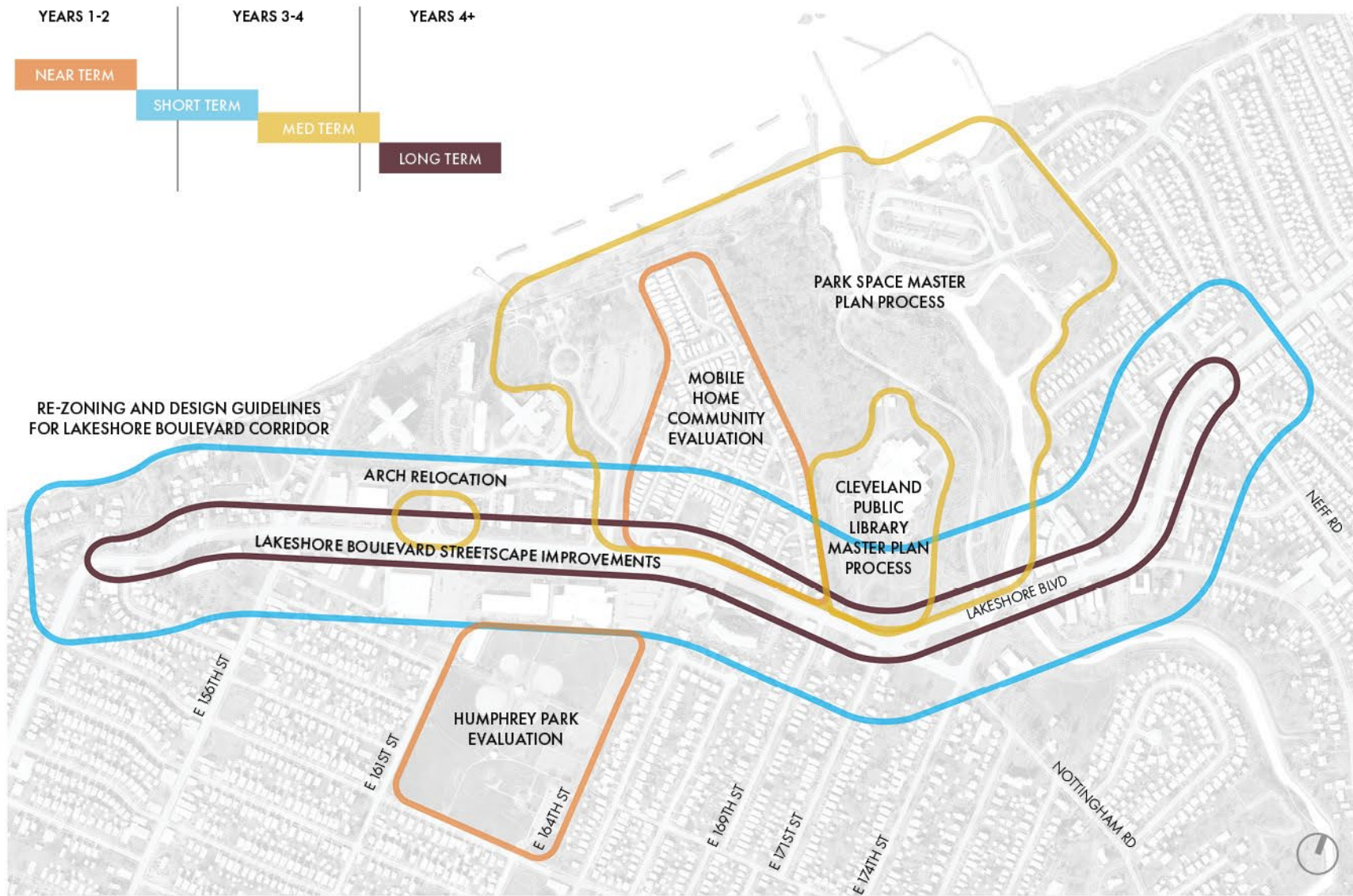
Recommendation Revitalized Lakeshore Boulevard

An aerial photograph of a city, likely Los Angeles, showing a large stadium (SoFi Stadium) and surrounding urban development. The image is faded and serves as a background for the text.

IMPLEMENTATION/ NEXT STEPS



Next Steps Implementation Timeline



Next Steps Implementation